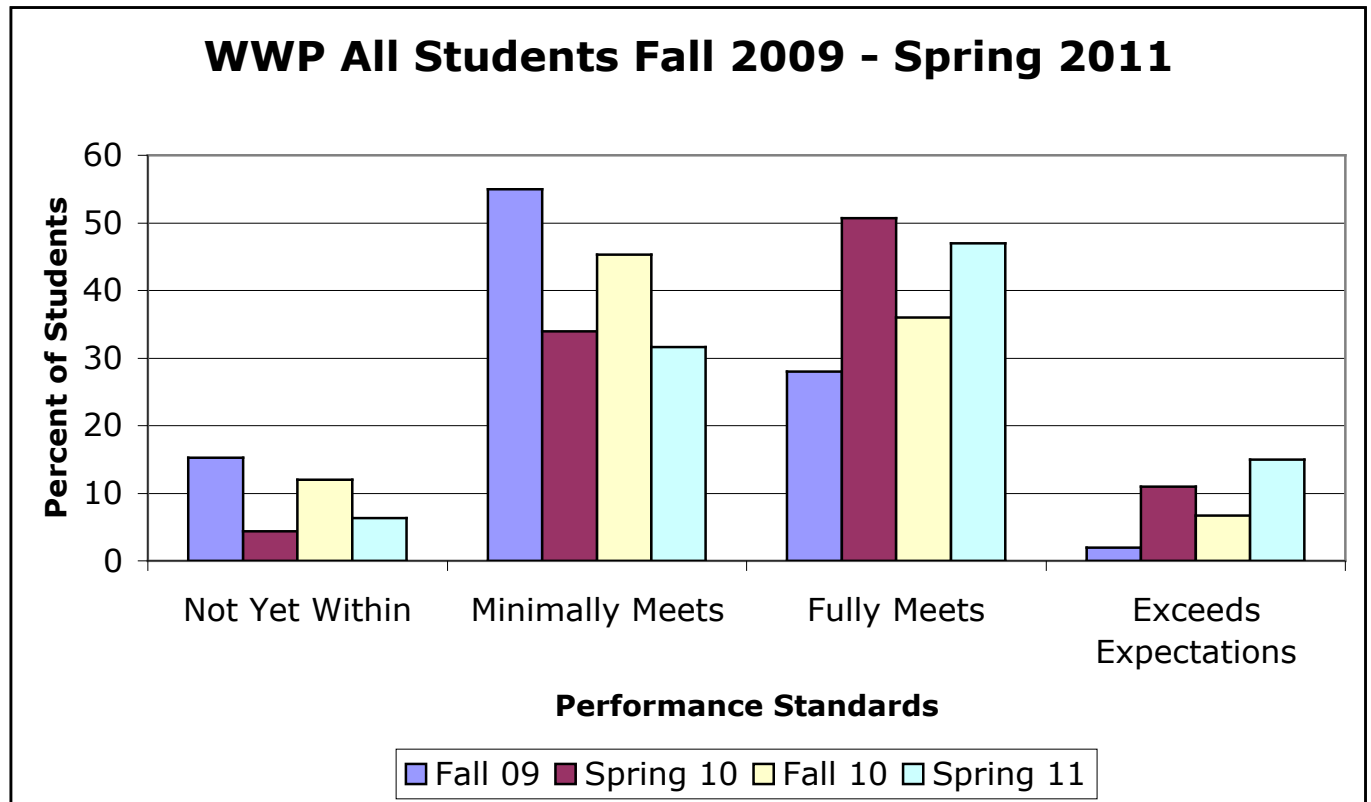
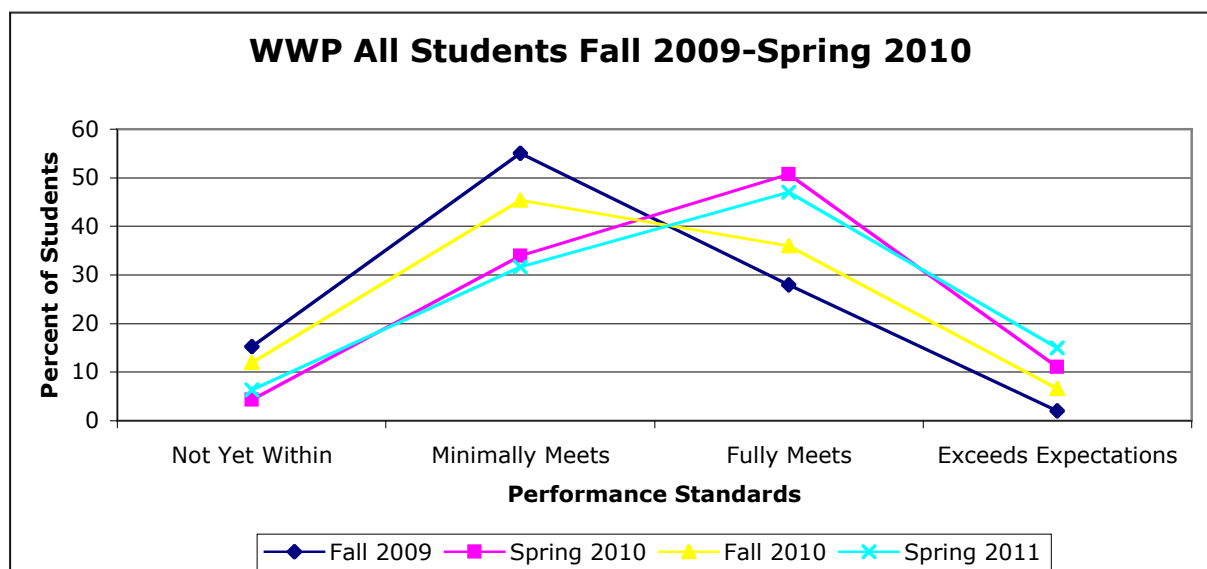


WWP Cohort Group Fall 2009 - May 2011

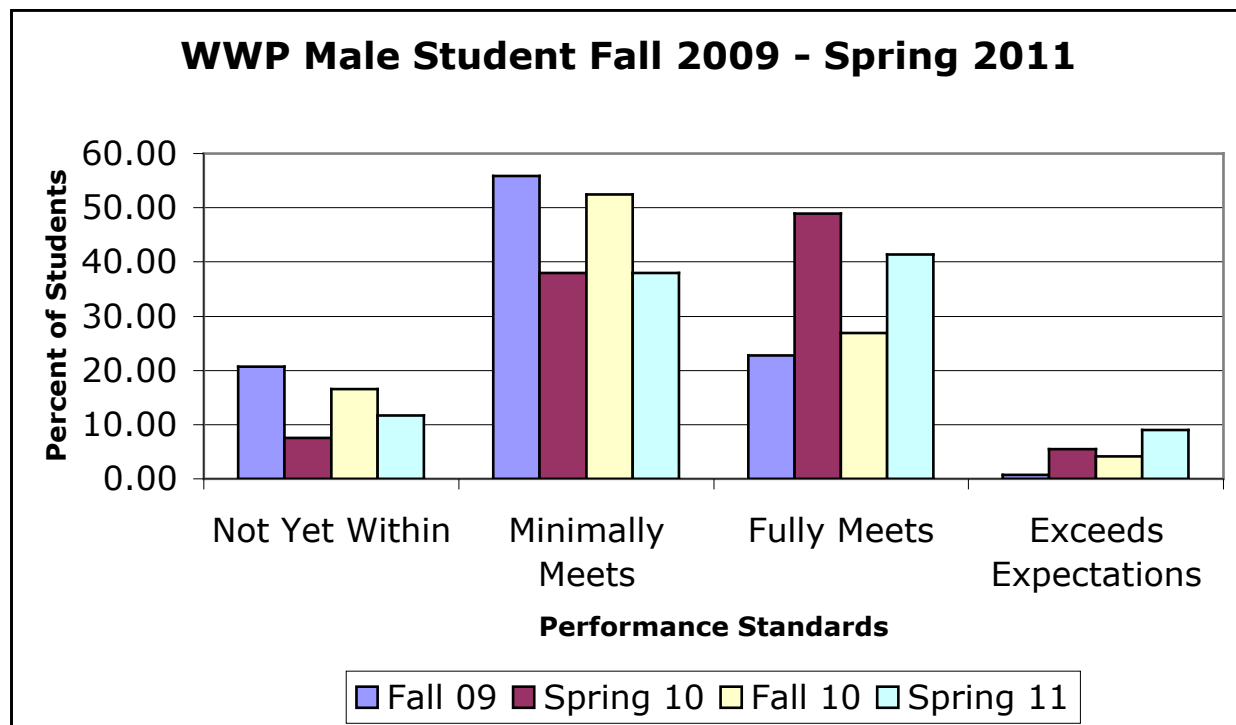
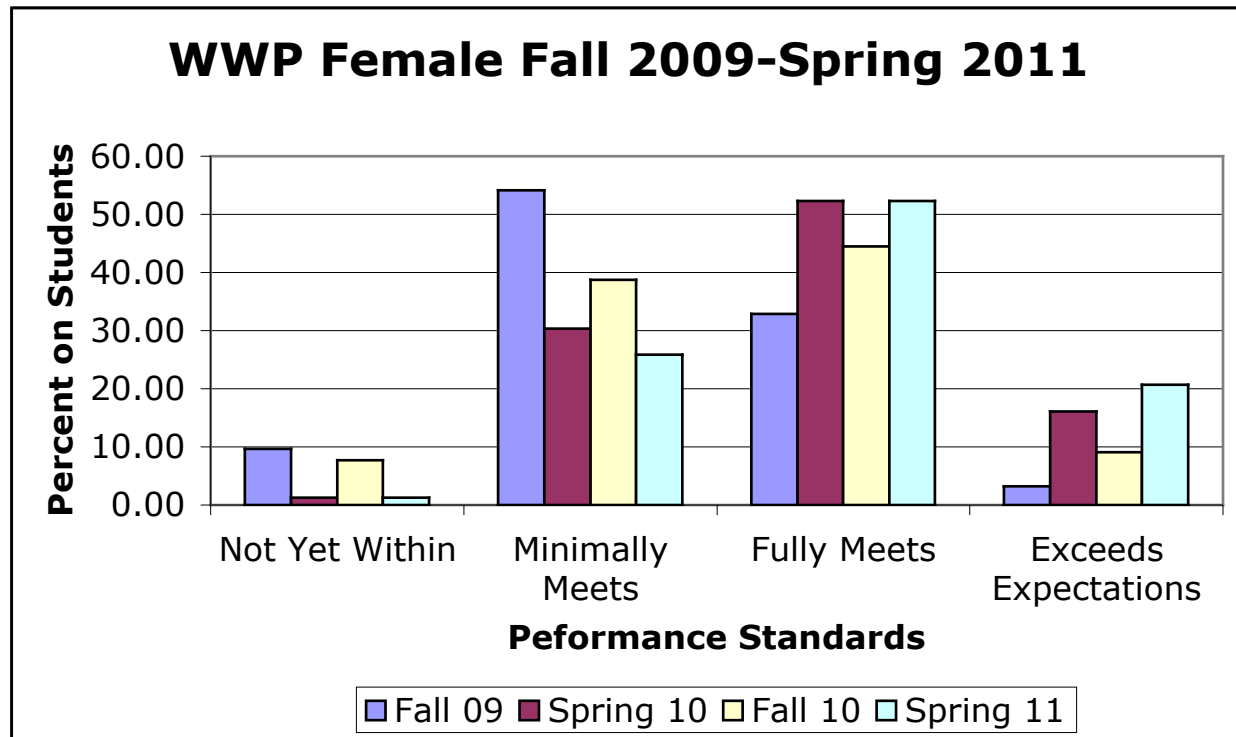
Total Students with 4 samples (Fall 2009, Spring 2010, Fall 2010 and Spring 2011) - 300
Down from 2009-2010 (48 students) (32 left district last summer)



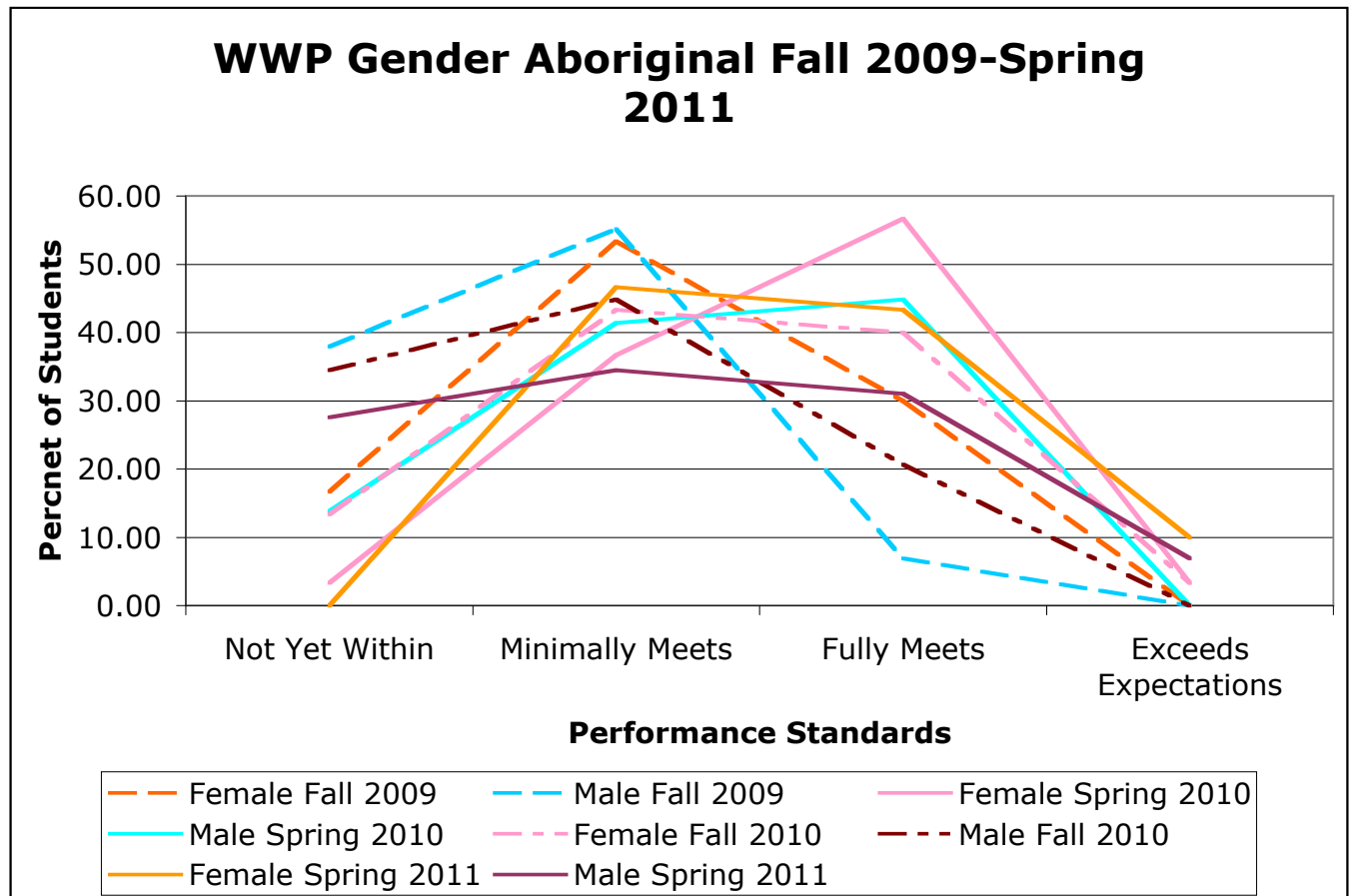
Meeting or Exceeding	Fall 2009 85%	Spring 2011 94%
Fully or Exceeding	Fall 2009 30%	Spring 2011 62%
Last year Fully or Exceeding	(29%)	(51%)



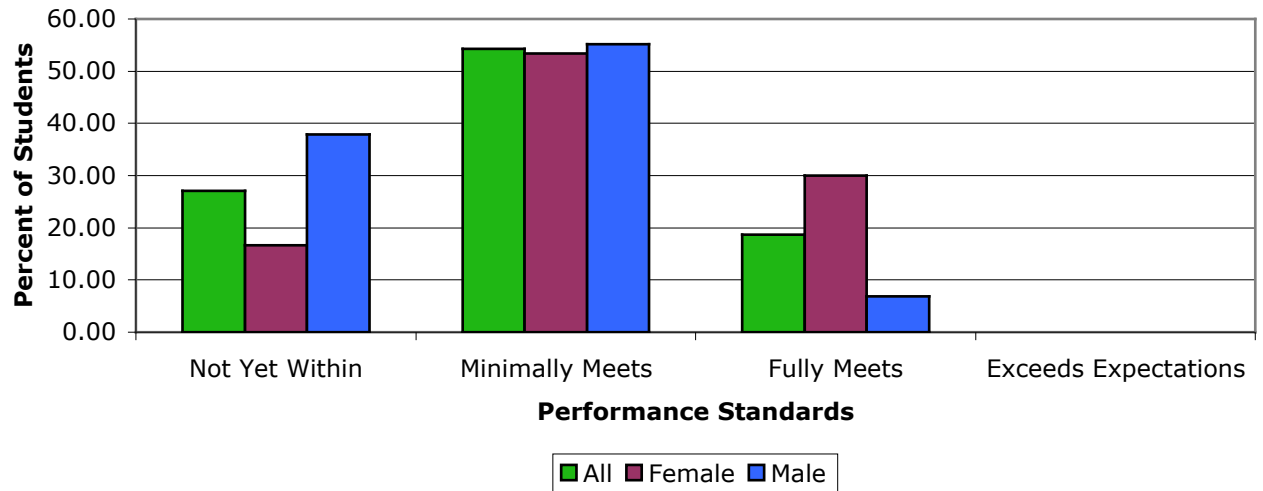
Gender Breakout (Female 155 and Male 145)



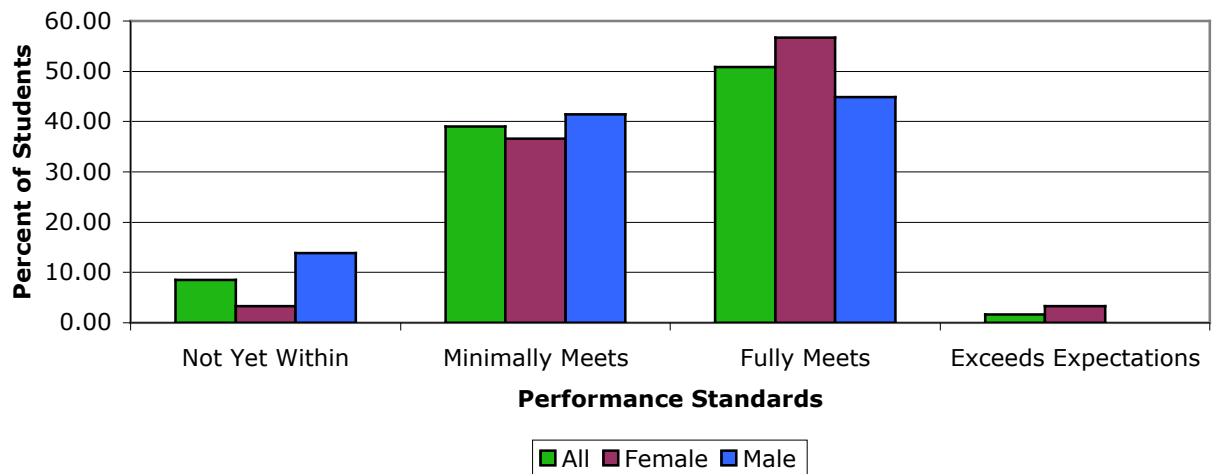
Aboriginal Students Total 59, 30 Female and 29 Male

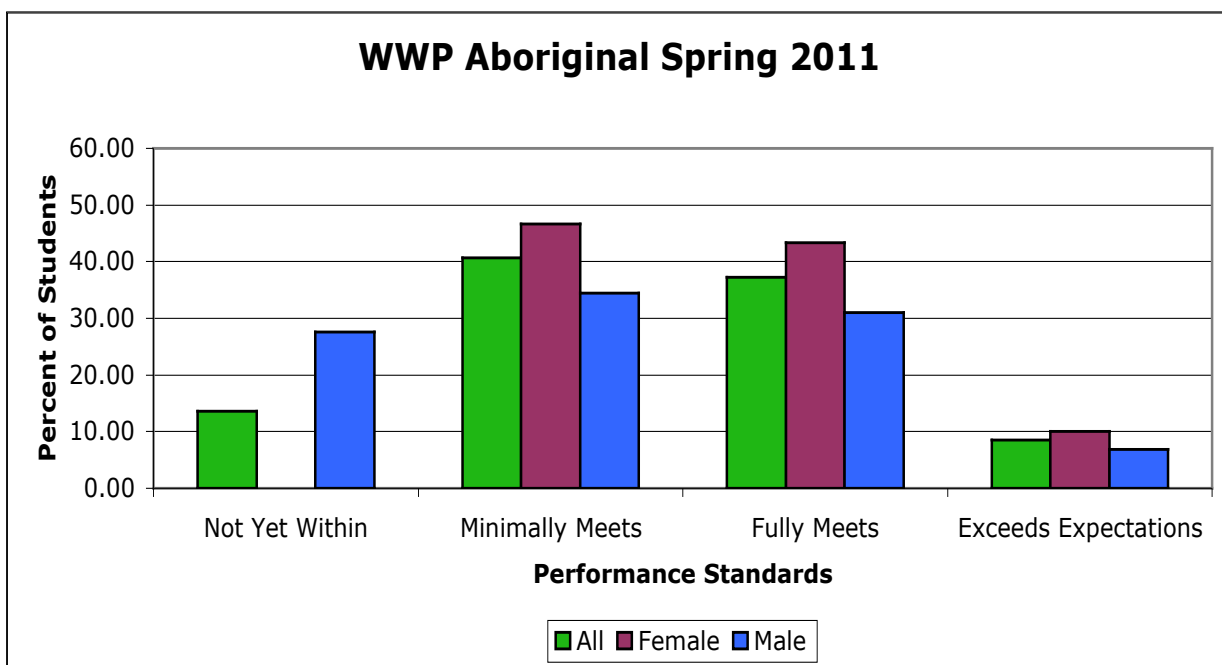
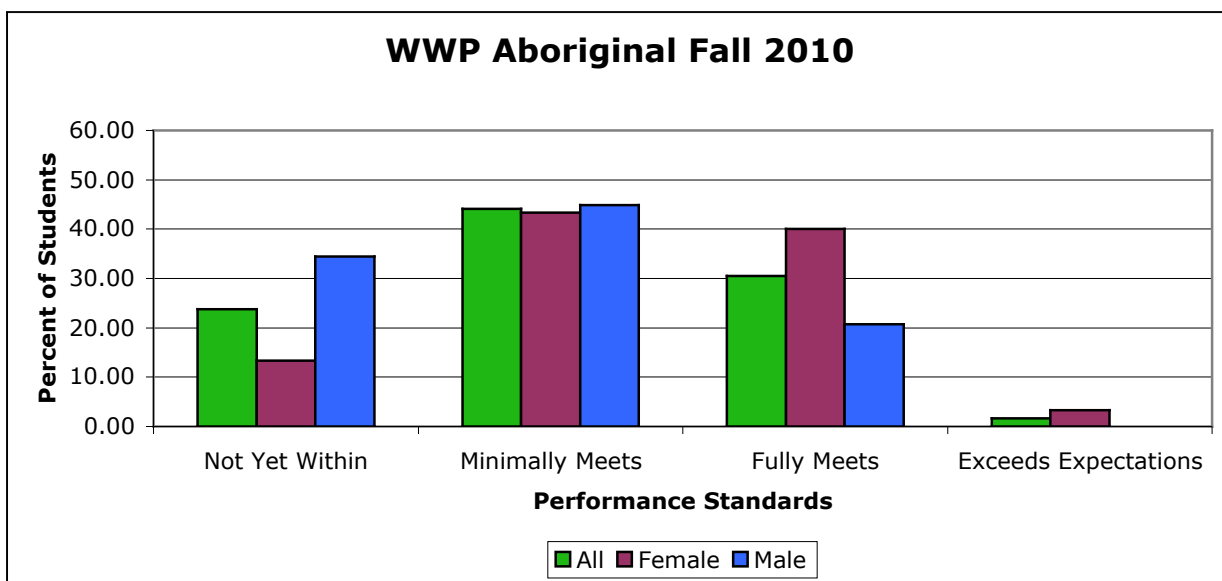


WWP Aboriginal Fall 2009



WWP Aboriginal Spring 2010

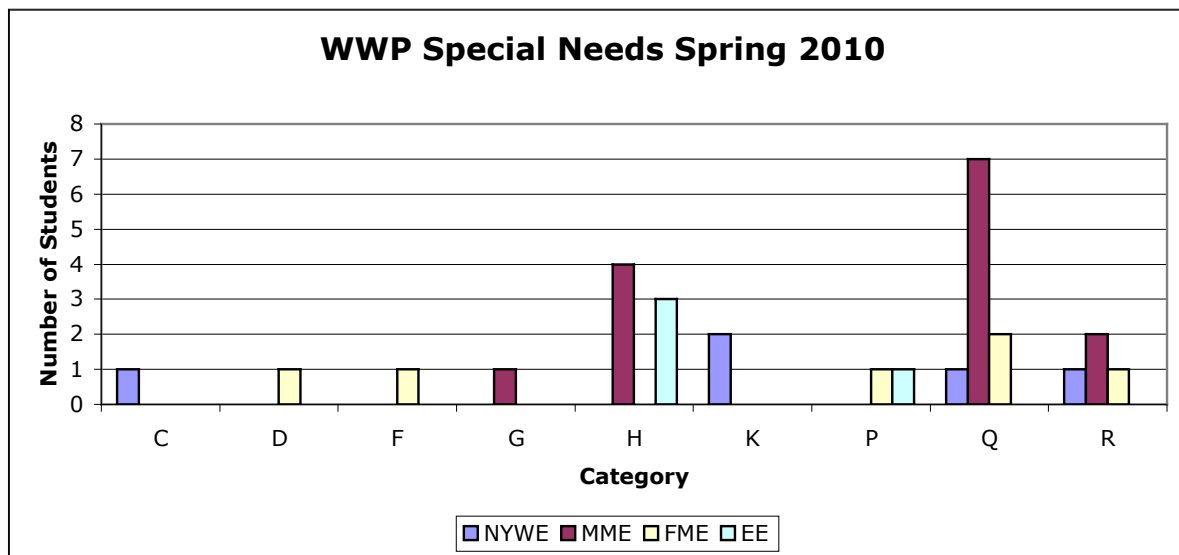
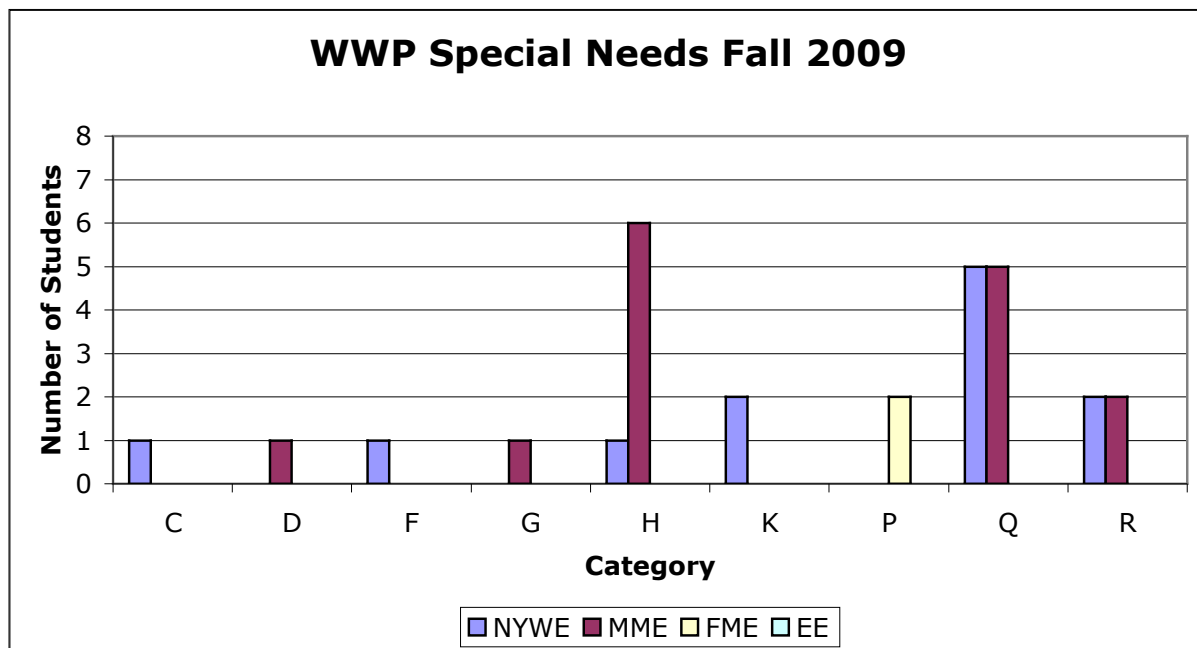




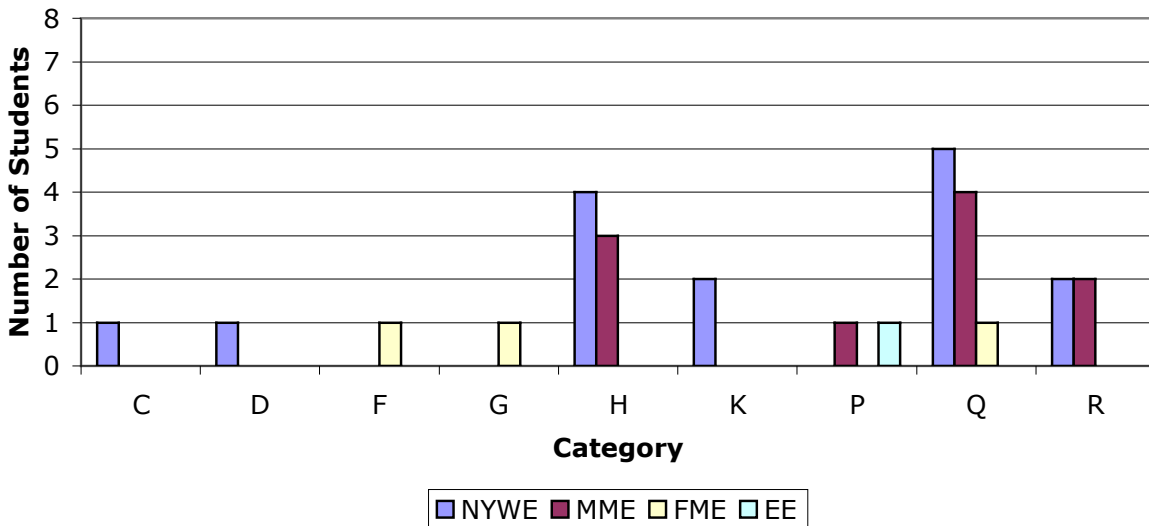
Meeting or Exceeding	Fall 73%	Spring 19%
Fully or Exceeding	Fall 29%	Spring 76%

Special Needs Students

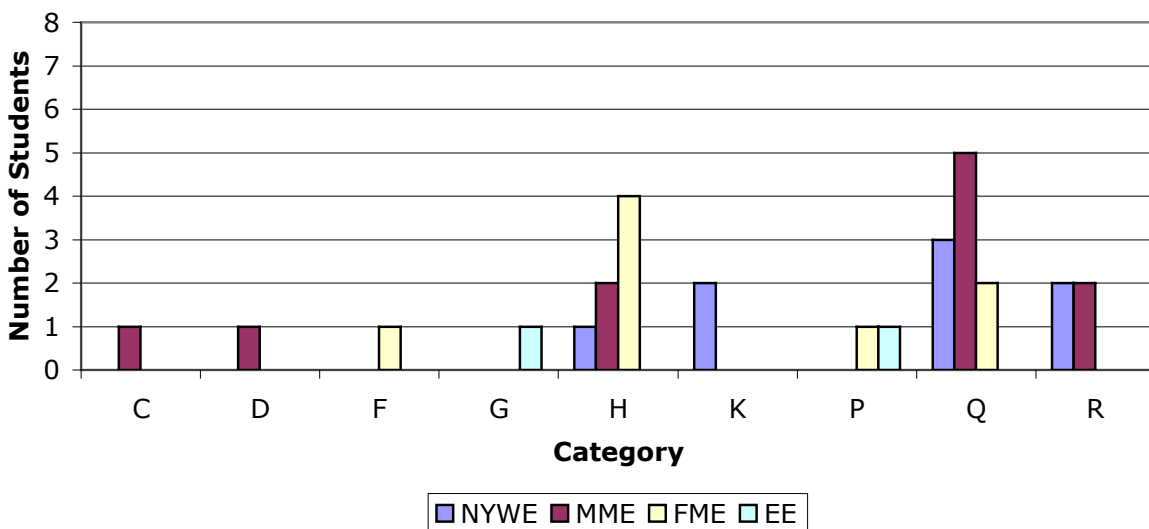
A	0	Physically Dependent
B	0	Deaf/blind
C	1	Moderate to Profound Intellectual Disability
D	1	Physical Disability or Chronic Health Impairment
E	0	Visual Impairment
F	1	Deaf or Hard of Hearing
G	1	Autism Spectrum Disorder
H	7	Intensive Behaviour Intervention/Serious Mental Health
K	2	Mild Intellectual Disability
P	2	Gifted
Q	10	Learning Disability
R	4	Moderate Behaviour Support/Mental Illness



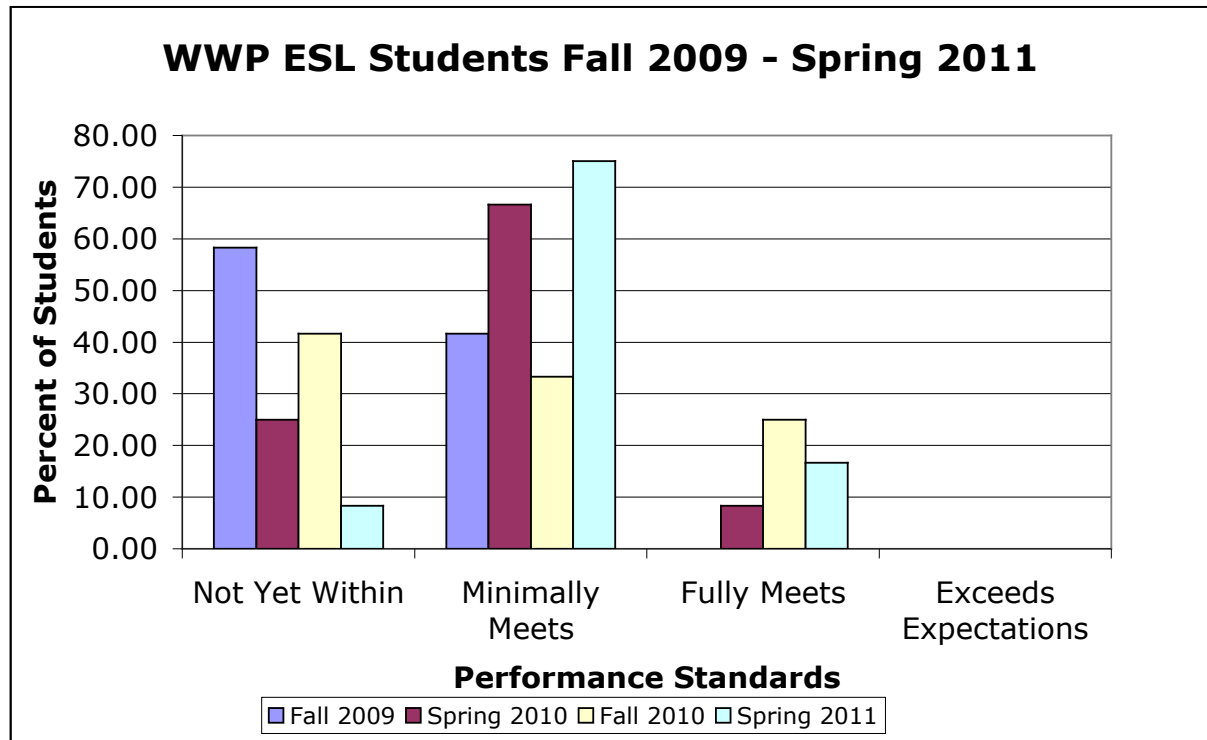
WWP Special Needs Fall 2010



WWP Special Needs Spring 2011



ESL Population of 12 students



French Immersion 20 students

